

ASSISTING YOU



IN SAVING PEOPLE



0917 545 7597 / 0998 557 1278
8844 0599 / 8810 9989



www.eppfiresafetyrescue.com



4th Floor APP Bldg.
2584 Bonifacio Street
Bangkal, Makati City

VEHICLE CRASH RESCUE EXTRICATION EQUIPMENT

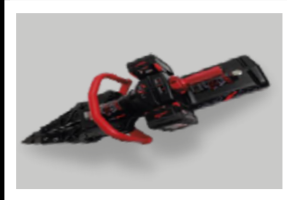


TNT has a higher cutting force of up to 320,000lbs and spreading force up to 286,000lbs



Battery Operated. Designed to be lighter, quieter in operation, faster acting and more powerful than any battery powered and hydraulics available, the STORM Series represents the newest generation of battery powered rescue tools.

Powered by Milwaukee M18 or Dewalt 20V Platforms CUTTER



- Hydraulic Equipment
- SET A- Separate Cutter & Spreader
- SET B-Hydraulic Combi Tool
- Cutter & Spreader Combination

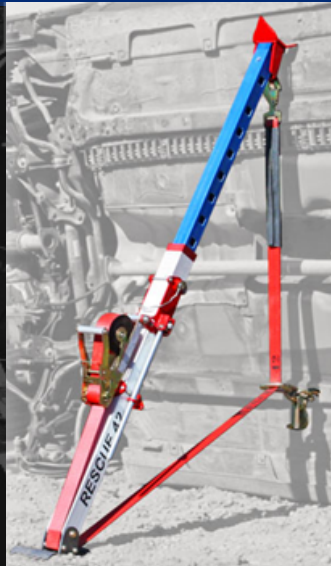
SCAN FOR
MORE INFO



The TeleCrib® Junior

A compact and fast all-in-one strut designed for basic stabilization.

It's a perfect tool for engines/pumpers, and allows First Due rescuer to stabilize a vehicle within minutes of arrival. Made of the same DuPont Kevlar infused composite as the full sized TeleCrib System, the TeleCrib Junior is lightweight and simple to operate, but supports an impressive 5000lb working load with a 2:1 safety factor. The TeleCrib Jr. works as a stand-alone strut and interfaces with the full sized TeleCrib System and Shark Step Chocks



RESCUE 42 The Shark®

The Shark™ Collapsible Step Chock will save critical storage space on your rig for more important lifesaving equipment.

Its innovative design is taller than most traditional step chocks, collapses to 5½" and is designed to nest together when stored for further space savings. You can fit 4 Sharks™ in less space than 2 wood or plastic chocks require.

Shark™ Large (SRK-L2): The Large Shark™ is intended for rescue operation that regularly use step cribbing. At 16½" tall, it can stabilize most high clearance vehicles.

Features

- Collapsible & stackable
- Taller than most traditional step chocks
- can be used upside-down as a wedge
- Meets 2:1 height to base ratio for safety
- Positive grip teeth bite into rocker panels, boards and road surfaces
- Can be used as a wheel chock
- Easy to clean & decontaminate
- Proudly manufactured in the USA



SCAN FOR
MORE INFO



USAR-URBAN SEARCH AND RESCUE EQUIPMENT



Fighting for performance

LEADER SEARCH MS 2

Used during SAR operations following a building collapse, to search for victims trapped under rubble in inaccessible areas or difficult-to-access confined spaces. Included in the MULTISEARCH (or MS) kit, the MULTI-APP control box allows you to connect 5 LEADER peripherals (CAM, TIC, RD90, SEARCH, SCAN).

Those included in this MULTISEARCH kit can be used for various search options by connecting the appropriate peripheral: SEARCH to listen for sound made by the victim and their location



LEADER CAM

Used during rescue operations to see and communicate with victims trapped in inaccessible areas located high up or in confined spaces that are difficult to access such as rubble, pits, crevices, cavities, etc. LEADER Cam thus makes it possible to assess their level of assistance and rescue.



SCAN FOR
MORE INFO



RESCUE EQUIPMENT FOR COLLAPSED STRUCTURE



High Pressure Lifting Bags NOVA

15 bar (218 psi) with 100 tons lifting capacity

Set Includes:

- 2 pcs. air lifting bag
- 1 unit handheld double Deadman 8 bar
- 1 unit pressure reducer 300 bar
- 1 unit dual connector
- 2 compressed-air cylinders 300 bar
- 1 set dual flat bag connector (4 pcs. Per set)
- 2 units air cylinder 200 bar
- 1 pc. yellow inflation hose 10 m
- 1 pc. red inflation hose 10 m

SCAN FOR
MORE INFO



EMERGENCY MEDICAL EQUIPMENT



**Kendrick
Extrication
Device**



**First Aid
Kit**



**CPR Training
Mannequin**



**Cervical
Collar**



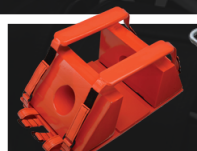
**Foldable
Stretcher
(2-fold stretcher)**



**Trauma
Bag**



**Spine Board
with Spider Strap**



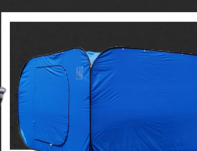
**Universal
Head Immobilizer**



**Scoop Stretcher
Aluminum Alloy**



**Aluminum
Basket Stretcher
(collapsible)**



**Modular
Tent**



**Automated
External
Defibrillator**

WARNING DEVICE

LK-M2

Brand: LIONKING

LK-JDL400 is an omnidirectional siren from vertical mounting. Powered by a single phase or three phase motor.

Below are the specifications:
Sound Rating: 123±2dB(A) @1M
Electric Motor: 2.2Kw,
220/240/380/400/440V AC,
50/60Hz
IP Rating: IP44
Output Frequency: 500/560±20Hz
Single Tone Net Weight: 50Kg



LK-M2



LK-JDL400

LK-JD400

Brand: LIONKING

LK-JDL400 is an omnidirectional siren from vertical mounting. Powered by a single phase or three phase motor.

Below are the specifications:
Sound Rating: 123±2dB(A) @1M
Electric Motor: 2.2Kw,
220/240/380/400/440V AC,
50/60Hz
IP Rating: IP44,
Output Frequency: 500/560±20Hz
Single Tone Net Weight: 50Kg

WARNING & EMERGENCY POWER DEVICE



**Rigid Bolt
Cutter (24")**



**Megaphone
with Siren**



**HINOKI Diesel
generator**

SX – 26 series

A product made in Italy, meant for emergency lighting when power source is not available. It can grant with a great autonomy with very low weight, easy carry & portable with modular concept. The power supply is from the battery.

SERVOLUX Maxi 1 SX-26 with 12V 26Ah battery Mast diam 52 – 3 sections –
2500/967mm Telescopic with Bearing, Bracket and Spring Floodlight LED 80W
Total 7,050 Lumens12V / 230V Battery Charger for SX-26Battery charge indicator
– for SERVOLUX 12V



SCAN FOR
MORE INFO



CHAINSAW

STIHL®



CHAINSAW-STIHL MS230, 16"

Technical Specifications:
Displacement: 45,4 cm³
Power output: 2/2,7 kW/bhp
Weight: 4,6 kg
Power-to-weight ratio: 2,3 kg/kW
Sound pressure level: 101 dB(A)
Sound power level: 111 dB(A)
Vibration level left/right: 6,4/7 m/s²



CHAINSAW-STIHL MS462, 25"

Model: MS 462, 25"
Technical Specifications:
Displacement cm³: 105, 7
Weight: 10, 8
Power-to-weight ratio kg/kW: 2, 2
Speed at maximum power Um: 7000
Tank volume l: 1, 20



CHAINSAW-STIHL MS720, 36"

Model: MS 462, 25"
Technical Specifications:
Displacement cm³: 105, 7
Weight: 10, 8
Power-to-weight ratio kg/kW: 2, 2
Speed at maximum power Um: 7000
Tank volume l: 1, 20

SCAN FOR
MORE INFO



WATER SEARCH AND RESCUE EQUIPMENT



NRS RESCUE

1. Havoc Helmet
2. Steamer 3/2mm Wetsuit
3. Rapid Rescuer PFD
4. Utility Gloves
5. ATB Wetshoe
6. Rescue Life Vest
7. Rescue Can
8. Ring Buoy/Life Buoy
9. Rescue Tube
10. Throwbag



SCAN FOR MORE INFO



Sea Ambulance

Fiberglass Boat(10-15 persons capacity with outboard motor and trailer



Specifications: MARINA documentation:

- Vessel Plans approval
- Vessel Name Clearance
- Construction : Fiberglass
- Authority to Acquire thru Local construction
- Length over all: 40 ft. 0in.
- Beam : 8 ft. 9in.
- Construction Certificate
- Depth : 3.8 ft. 1in.
- Builder's Certificate
- Affidavit of Ownership

Hull Construction

- Tonnage Measurement Certificate
- Melded fiberglass
- polyurethane foam filled
- Port and starboard seats
- Aft Seating with storage underneath
- Navigational Side lights red and green and Stern light, Panel switch

Standard Accessories

- SST Towing eye (Bow eye) (1pc.) and Stern eye (2 pcs)
- SST Mooring cleats (3)
- Drain plug (2)
- Wrap around PVC bumper with aluminum trim
- 100% FRP Hull (Fiberglass made)

Rescue Boats



Shallow V-hull design that enhances adaptability for various applications, such as: Flood Rescue, Coast Patrol, Fishing or Leisure.

Made from Marine Grade Polyethylene known for its strength and durability including its Non-Conductive properties against the risk of lightning strikes.

Dimensions: 14ft.L X 5ft. 6in. W

Accessories:

- 4 pcs. Paddles, Life Line, 10 pcs. Life Vest, 10 pcs. Rain Buoy, 2 pcs. Removable
- Seats, Stainless Steel Handle Cleats with Life
- line included and three (3) Storage
- Compartments.



Outboard Motor



SCAN FOR MORE INFO



Rescue Patrol Boat



Cabutered two stroke engine, manual start, Shprt shaft 15", long shaft 20", two cylinder in-line, Brand new, complete with the following accessories such as:

- Tiller handle assy
- Fuel tank with fuel line assy – 6 gallons capacity
- Aluminum propeller
- Owner's manual

Inflatable Rubber Boat



Achilles HB-385DX

8- man capacity, made of heavy duty reinforced CSM/Hypalon fabric tube with Deep "V" fiberglass rigid hull complete with the following specification and accessories.



FIRE FIGHTING EQUIPMENT



1	Fireman's Helmet	Firemaster
2	Fireman's Gloves	Majero Fire Gloves
3	Fireman's Coat & Pants	Portwest
4	Fireman's Boots	HARVIK
5	Fireman's Helmet	Pacific
6	Fireman's Coat & Pants	Atram
7	Self-contained Breathing Apparatus	SEKUR
8	Fire Hose	5-Elem, UL Listed



SELF-CONTAINED BREATHING APPARUSES DIABLO INDUSTRIAL MM

Description:

DIABLO compressed air self-contained breathing apparatus is available in INDUSTRIAL MM version for industrial applications, complying with EN 137 Norm. DIABLO INDUSTRIAL is available in Type 1 and Type 2 versions. Diablo Industrial MM Type 1 can be used in potentially explosive environments. Diablo Industrial MM Type 2 is also MED approved.

Certifications:

- EC Certified according to 2014/90/UE MED Directive
- EC Certified according to Article 10 of 89/686/EEC PPE Directive
- EC Certified according to 2014/68/UE PED Directive

Main Components:

- The light weight and mechanically resistant carrying frame, is made of self-extinguishing fiber glass reinforced synthetic resin and is designed in order to fit ergonomically the shape of the body.
- The harness is made of self-extinguishing synthetic woven fabric.
- The buckles are flame resistant and quickly adjustable.
- The shoulder straps are padded and house the medium and high pressure hoses inside, thus protecting them from fire and abrasion.
- In the new C2000 balanced type pressure reducer (patented) the numbers of the moving components have been reduced by 50%.
- The result is an exceptional response time, an extremely compact medium pressure cycle, smooth breathing and total performance stability.
- The C2000 pressure reducer is equipped with a medium pressure connection to the demanded valve.

HIGH ANGLE RESCUE TOOLS



Access the inaccessible®



HARNESS



Aspir-Seat Harness

Avaobod-full body Harness

GLOVES



Cordex

PULLEY



RESCUE

TWIN

KOOTENAY



Tandem®



Tandem® Speed

DESCENDER



I'D'S

I'D'L

MAESTRO'S

MAESTRO'L



ASCENSION



RESCUCENDER

HELMET



VERTEX® HI-VIZ

VERTEX® Vent

CARABINER



OK

Am'D

Vulcan



GRIGRI® +



HEADLAMP



RACK



PULLEY



QUICKROLL

QUICK'UP+

UPROLL

SPARROW

CHEST ASCENDER HC

CHEST ASCENDER+

ORBITER F

ORBITER L

ORBITER M

ORBITER S

ORBITER T

GLOVES



PROGRIP

DESCENDER



OTTOR S-STEEL

OTTOR R

OTTOR L

RESCUE UNIFORMS

TACTICAL JACKET



BLACK

BLUE

FATIGUE

GOLD

GREEN

ORANGE

NAVY BLUE

RED

Features:

- Front zippered pocket with secret pocket
- Cordura double layer elbow for protection
- Cordura shoulder for more heavy utility work
- Zippered front with collar closure
- Articulated elbow for more comfort moving
- Shoulder pocket with Velcro for patches
- Back air vent for body cooling

Materials:

- Cordura Twill
- Nylon Screen

RESCUE UNIFORMS

RASH GUARD



BLUE

BLACK

FATIGUE

GREEN

ORANGE

GOLD

NAVY BLUE

RED

Features:

- Shoulder pocket with velcro for patches
- Secret shoulder pocket with zipper closure
- Double layer
- Cordura elbow
- 1/4 neck zipper opening with collar
- Articulated elbow for more comfort moving
- Quick dry spandex inner lining

Materials:

- Base: Spandex Twill
- Reinforcement: Cordura

RESCUE UNIFORMS

U-TACS UTILITY PANTS



Black

Brown

Dark Gray

Navy Blue

Tan

Features:

- 8 multi-pockets
- Cellphone pocket on cargo
- Built-in knee pad
- Double reflective strip
- Adjustable waist
- Utility Clip-On loop
- Metal button & Zippered fly

MULTI RESCUE PANTS



Black

Gold

Navy Blue

Orange

Red

Features:

- Front side back reflector
- Safety grab line nylon belt
- Detachable knee pad
- Radio clip-on belt
- Adjustable bottom & waist belt
- Articulated Cordura knee support
- Cordura reinforce strap for abusive abrasion
- Thread: Tkt 50 polyester
- Belt: Nylon
- Zipper: metal brass
- Buttons: carbon plastic

Materials:

- Base Pants: 60% cotton
- Twill 40% Polyester
- Reinforced Cordura 600D

WORKWEAR



Black

Battle Green

Dark Gray

Navy

Orange

Red

Royal Blue

Tan

Xmas Green

Features:

- 8 multi-pockets
- Cellphone pocket on cargo
- Bottom strap pocket flags
- Built-in knee pad
- Double layer seat
- Double reflective strip
- Adjustable waist

Materials:

- Base Pants: 65% cotton twill, 35% Polyester
- Reinforced cotton twill
- Belt: Nylon
- Thread: Tkt 50 polyester
- Zipper: metal brass

STREET RESCUE



Light Gray

Battle Green

Black Orange

Brown

Charcoal

All Black

Navy

Royal Blue

Xmas Green

Features:

- 10 multi-pockets
- Front cellphone pocket
- Deep back and front pocket
- Bottom reflective strip
- Double layer seat
- Built-in knee pad
- Adjustable waist
- Key holders

Materials:

- Base Pants: 65% cotton twill, 35% Polyester
- Reinforced cotton twill
- Belt: Nylon
- Thread: Tkt 50 polyester
- Zipper: metal brass
- Plastic key holder